

HOW TO ASSEMBLE VOLTRON

YOU WILL NEED



Scissors or craft knife



Multipurpose glue



Butter knife



Ruler



Cutting mat (optional)



GETTING STARTED

- 1** Score all the pieces: Using a ruler as a guide, run the back side of a butter knife firmly along all **dashed** and **dotted** lines.



- 2** Using scissors or a craft knife and cutting mat, cut out all of the pieces along the **solid** lines.



- 3** Fold all pieces along score lines, using the folding key below as a reference.

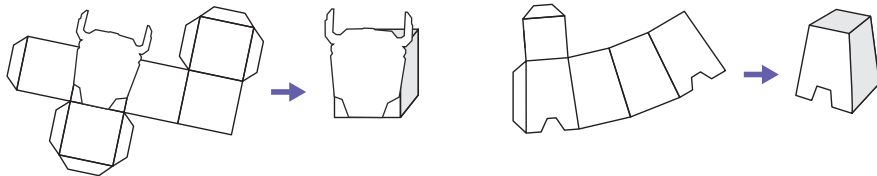


MOUNTAIN FOLD

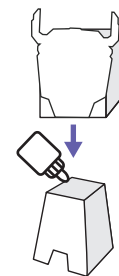
.....

CHARACTER ASSEMBLY

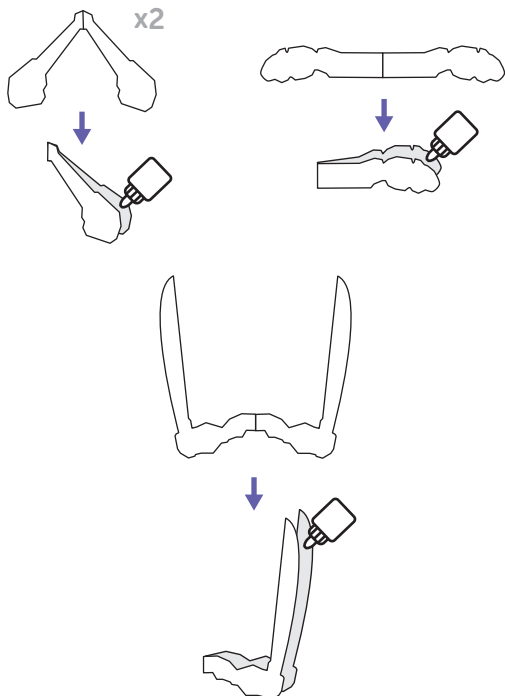
- 4** Fold together the head and body of your character while following the indicated glue marks. The head should look like a box!



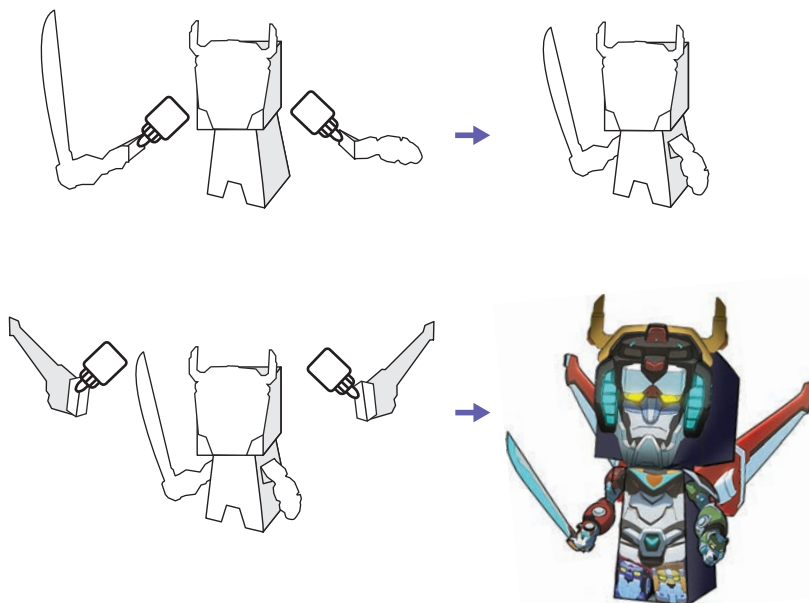
- 5** Gently glue the head to the body of the character. Use your finger to prop up the body when you apply the glue.



- 6** Fold arms and wings in half and glue two sides together. Then fold at arm crease to attach to the body.

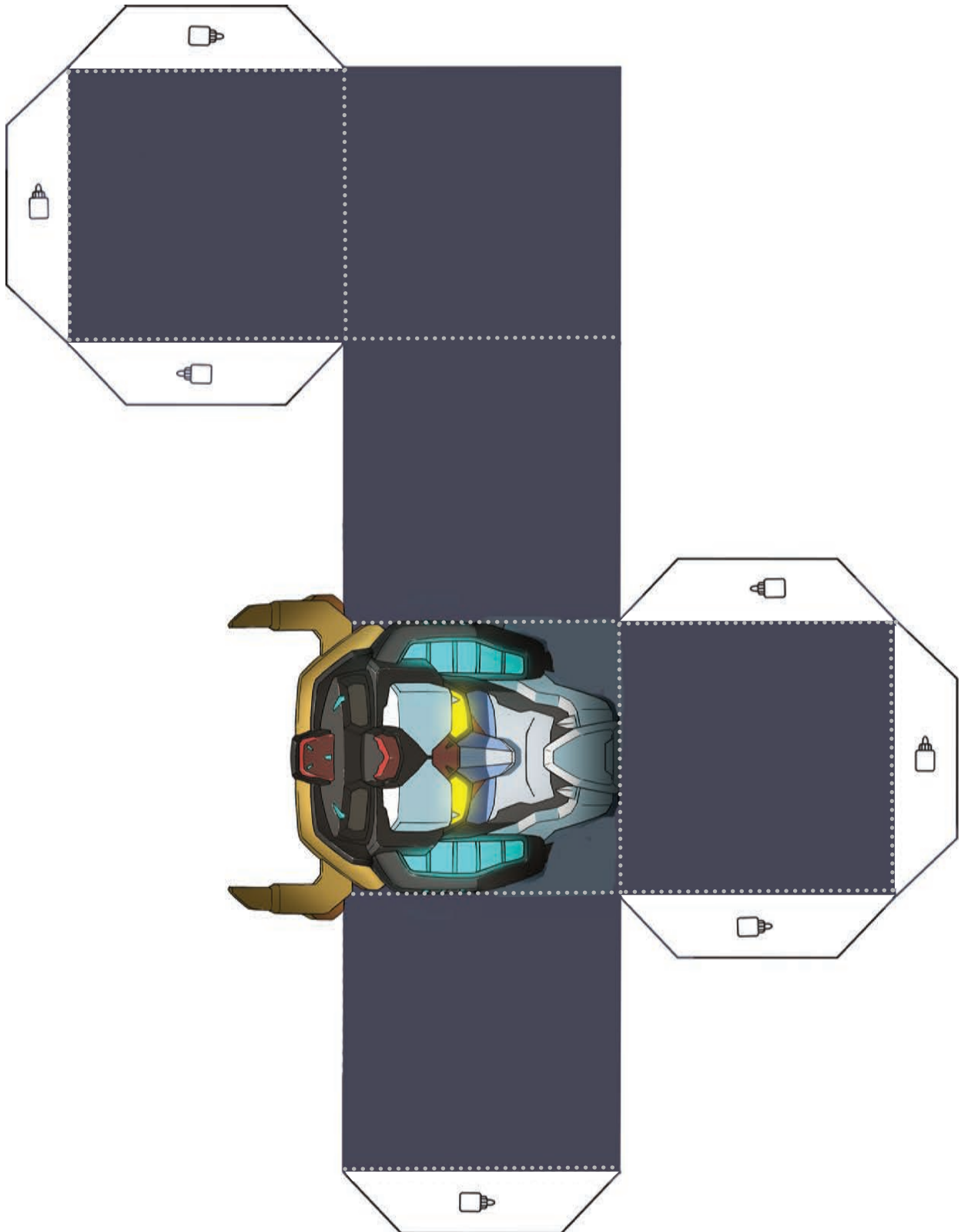


- 7** Gently glue arms and wings in place on side of body.





VOLTRON





VOLTRON

